

GROUP 'A'
(2-BEDROOMS)

UNIT	GROUP BLDG.
A1	A-1
A2	A-2
A3	A-1
A4	A-2
A5	A-1
A6	A-2
A7	A-2
A8	A-3
A9	A-2
A10	A-3
A11	A-2
A12	A-3

GROUP 'C'
(7-BEDROOMS)

UNIT	GROUP BLDG.
C5	C-1
C6	C-2
C7	C-2
C8	C-3
C9	C-2
C10	C-3
C11	C-2
C12	C-3
C13	C-3
C14	C-4
C15	C-3
C16	C-4
C17	C-3
C18	C-4
C19	C-4
C20	C-5
C21	C-4
C22	C-5
C23	C-4
C24	C-5
C25	C-5
C26	C-6
C27	C-6
C28	C-6
C29	C-6
C30	C-6
C31	C-6
C32	C-7
C33	C-6
C34	C-7
C35	C-6
C36	C-7
C37	C-7
C38	C-8
C39	C-7
C40	C-8
C41	C-7
C42	C-8
C43	C-8
C44	C-9
C45	C-8
C46	C-9
C47	C-8
C48	C-9

GROUP 'D'
(3-BEDROOMS)

UNIT	GROUP BLDG.
D1	D-1
D2	D-1
D3	D-1
D4	D-1
D5	D-1
D6	D-1
D7	D-1
D8	D-1
D9	D-1
D10	D-1
D11	D-1
D12	D-1
D13	D-1
D14	D-1
D15	D-1
D16	D-1

GROUP 'E'
(1-BEDROOMS)

UNIT	GROUP BLDG.
E24	E-5
E25	E-5
E26	E-6
E27	E-5
E28	E-6
E29	E-5
E30	E-6
E31	E-6
E32	E-7
E33	E-6
E34	E-7
E35	E-6
E36	E-7
E37	E-7
E38	E-8
E39	E-7
E40	E-8
E41	E-7
E42	E-8
E43	E-8
E44	E-9
E45	E-8
E46	E-9
E47	E-8
E48	E-9
E49	E-9
E50	E-10
E51	E-9
E52	E-10
E53	E-9
E54	E-10

GROUP 'F'
(2-BEDROOMS)

UNIT	GROUP BLDG.
F1	F-1
F2	F-2
F3	F-1
F4	F-2
F5	F-1
F6	F-2
F7	F-2
F8	F-3
F9	F-2
F10	F-3
F11	F-2
F12	F-3
F13	F-3
F14	F-4
F15	F-3
F16	F-4
F17	F-3
F18	F-4
F19	F-4
F20	F-5
F21	F-4
F22	F-5
F23	F-4
F24	F-5
F25	F-5
F26	F-6
F27	F-5
F28	F-6
F29	F-5
F30	F-6
F31	F-6

GROUP 'F'
(2-BEDROOMS)

UNIT	GROUP BLDG.
F32	F-1
F33	F-6
F34	F-1
F35	F-6
F36	F-1

GROUP 'G'
(1-BEDROOMS)

UNIT	GROUP BLDG.
G1	G-1
G2	G-2
G3	G-1
G4	G-2
G5	G-1
G6	G-2
G7	G-2
G8	G-3
G9	G-2
G10	G-3
G11	G-2
G12	G-3
G13	G-3
G14	G-4
G15	G-3
G16	G-4
G17	G-3
G18	G-4

GROUP 'B'
(2-BEDROOMS)

UNIT	GROUP BLDG.
B1	B-1
B2	B-2
B3	B-1
B4	B-2
B5	B-1
B6	B-2
B7	B-2
B8	B-3
B9	B-2
B10	B-3
B11	B-2
B12	B-3
B13	B-3
B14	B-4
B15	B-3
B16	B-4
B17	B-3
B18	B-4

GROUP 'C'
(7-BEDROOMS)

UNIT	GROUP BLDG.
C1	C-1
C2	C-2
C3	C-1
C4	C-2

OVERALL SITE & BUILDING CONFIGURATION PLAN
1" = 70'-0"

Floor Plan Cont. 28 Pg. 552
Filed and Recorded May-24-2004 02:24pm
2004-0156381
Juanita Hicks
Clerk of Superior Court
Fulton County, Georgia



THE UNDERSIGNED, A REGISTERED ARCHITECT, HAS VISITED THE SITE KNOWN AS CARLYLE HEIGHTS CONDOMINIUM AND VIEWED THE PROPERTY, AND, TO THE BEST OF HIS KNOWLEDGE, INFORMATION AND BELIEF; (i) THE EXTERIOR WALLS AND ROOF OF EACH SUCH STRUCTURE ARE IN PLACE AS SHOWN ON SAID PLANS; AND (ii) SUCH WALLS, PARTITIONS, FLOORS, AND CEILINGS, TO THE EXTENT SHOWN ON SAID PLANS, AS CONSTITUTE THE HORIZONTAL BOUNDARIES, IF ANY, AND THE VERTICAL BOUNDARIES OF EACH UNIT, INCLUDING CONVERTIBLE SPACE, HAVE BEEN SUFFICIENTLY CONSTRUCTED SO AS TO ESTABLISH CLEARLY THE PHYSICAL BOUNDARIES OF SUCH UNIT.

NAME: TODD E. ERNST

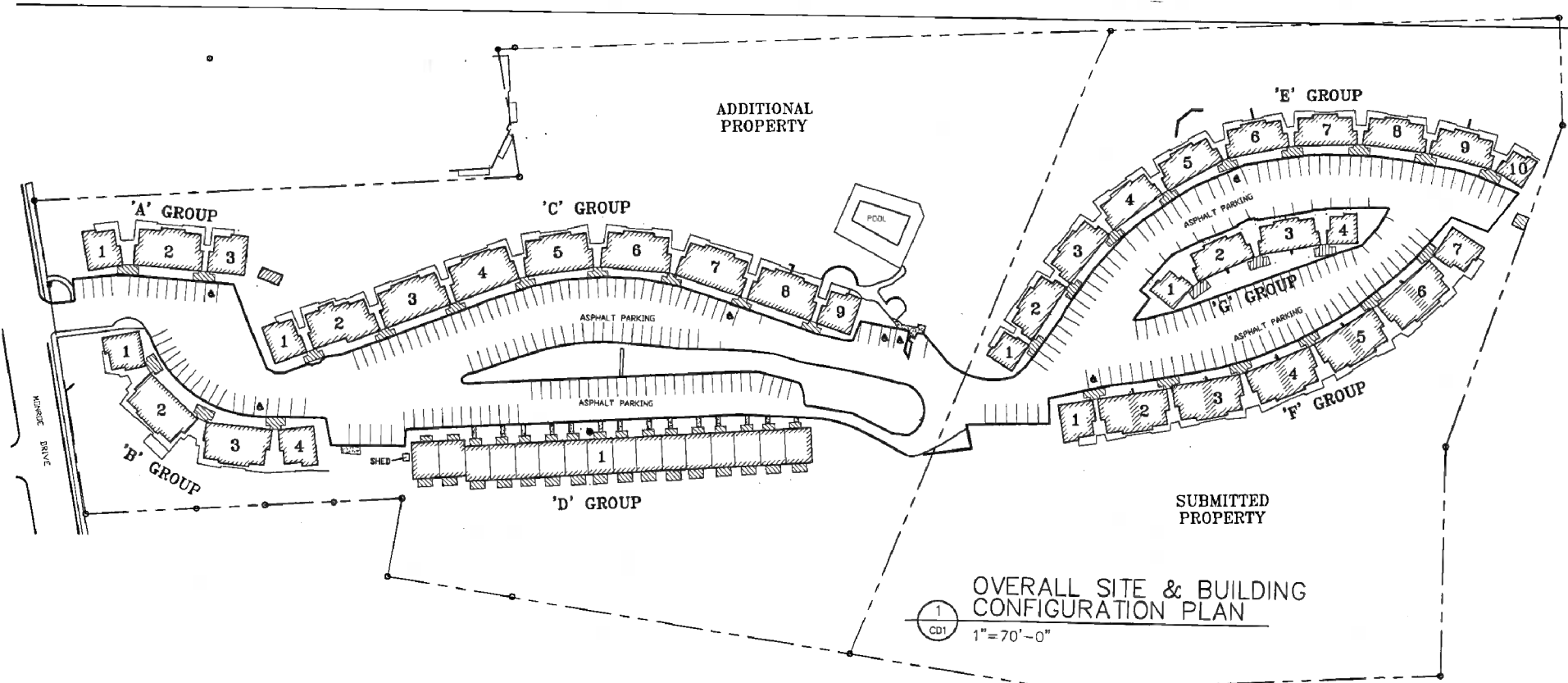
THE CONDOMINIUM DECLARATION FOR CARLYLE HEIGHTS CONDOMINIUM IS RECORDED IN DEED BOOK 37626, PAGE 168, OF THE SUPERIOR COURT OF FULTON COUNTY, GEORGIA RECORDS.

CARLYLE HEIGHTS CONDOMINIUM
1445 MONROE DRIVE
ATLANTA, GA 30324

DATE: 11 FEB 04
SCALE: NOTED

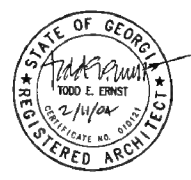
ISSUED FOR: Review Pricing Permit Construction

PROJ # 04010



GROUP 'E' (1-BEDROOMS)		GROUP 'F' (2-BEDROOMS)		GROUP 'F' (2-BEDROOMS)		GROUP 'G' (1-BEDROOMS)	
UNIT	GROUP BLDG.	UNIT	GROUP BLDG.	UNIT	GROUP BLDG.	UNIT	GROUP BLDG.
E24	E-5	F1	F-1	F32	F-7	G1	G-1
E25	E-5	F2	F-2	F33	F-6	G2	G-2
E26	E-6	F3	F-1	F34	F-7	G3	G-1
E27	E-5	F4	F-2	F35	F-6	G4	G-2
E28	E-6	F5	F-1	F36	F-7	G5	G-1
E29	E-5	F6	F-2			G6	G-2
E30	E-6	F7	F-2			G7	G-2
E31	E-6	F8	F-3			G8	G-3
E32	E-7	F9	F-2			G9	G-2
E33	E-6	F10	F-3			G10	G-3
E34	E-7	F11	F-2			G11	G-2
E35	E-6	F12	F-3			G12	G-3
E36	E-7	F13	F-3			G13	G-3
E37	E-7	F14	F-4			G14	G-4
E38	E-8	F15	F-3			G15	G-3
E39	E-7	F16	F-4			G16	G-4
E40	E-8	F17	F-3			G17	G-3
E41	E-7	F18	F-4			G18	G-4
E42	E-8	F19	F-4				
E43	E-8	F20	F-5				
E44	E-9	F21	F-4				
E45	E-8	F22	F-5				
E46	E-9	F23	F-4				
E47	E-8	F24	F-5				
E48	E-9	F25	F-5				
E49	E-9	F26	F-6				
E50	E-10	F27	F-5				
E51	E-9	F28	F-6				
E52	E-10	F29	F-5				
E53	E-9	F30	F-6				
E54	E-10	F31	F-6				

Floor Plan Cond 28 p. 553
 1000 E. ERNST REGISTERED ARCHITECT



THE UNDERSIGNED, A REGISTERED ARCHITECT, HAS VISITED THE SITE KNOWN AS CARLYLE HEIGHTS CONDOMINIUM AND VIEWED THE PROPERTY, AND, TO THE BEST OF HIS KNOWLEDGE, INFORMATION AND BELIEF; (i) THE EXTERIOR WALLS AND ROOF OF EACH SUCH STRUCTURE ARE IN PLACE AS SHOWN ON SAID PLANS; AND (ii) SUCH WALLS, PARTITIONS, FLOORS, AND CEILINGS, TO THE EXTENT SHOWN ON SAID PLANS, AS CONSTITUTE THE HORIZONTAL BOUNDARIES, IF ANY, AND THE VERTICAL BOUNDARIES OF EACH UNIT, INCLUDING CONVERTIBLE SPACE, HAVE BEEN SUFFICIENTLY CONSTRUCTED SO AS TO ESTABLISH CLEARLY THE PHYSICAL BOUNDARIES OF SUCH UNIT.

Todd Ernst
 NAME: TODD E. ERNST

THE CONDOMINIUM DECLARATION FOR CARLYLE HEIGHTS CONDOMINIUM IS RECORDED IN DEED BOOK 3162 PAGE 168 OF THE SUPERIOR COURT OF FULTON COUNTY, GEORGIA RECORDS.

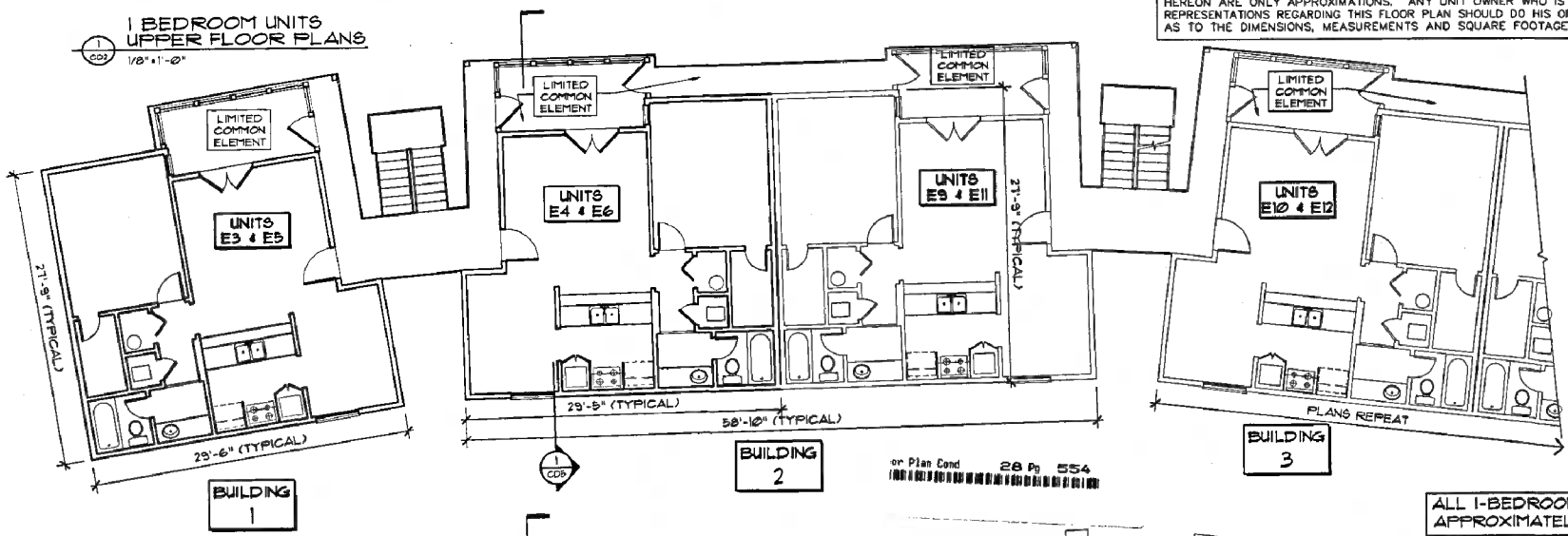
Architecture & Design
 1445 MONROE DRIVE
 ATLANTA, GA 30324

DATE: 11 FEB 04
 SCALE: NOTED
 REVIEWED FOR: Pricing Permit Construction

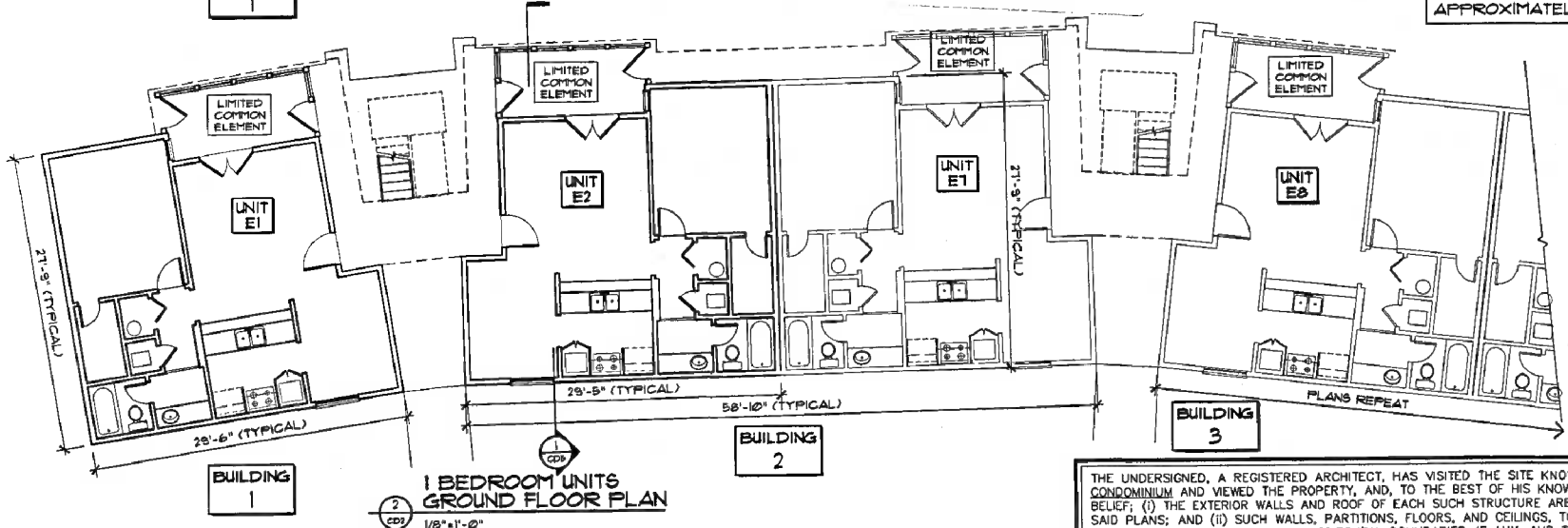
CD1
 PROJ # 0401b

1 BEDROOM UNITS
UPPER FLOOR PLANS
1/8" = 1'-0"

THIS FLOOR PLAN AND THE DIMENSIONS AND SQUARE FOOTAGE CALCULATIONS SHOWN HEREON ARE ONLY APPROXIMATIONS. ANY UNIT OWNER WHO IS CONCERNED ABOUT ANY REPRESENTATIONS REGARDING THIS FLOOR PLAN SHOULD DO HIS OR HER OWN INVESTIGATION AS TO THE DIMENSIONS, MEASUREMENTS AND SQUARE FOOTAGE OF THE UNIT.



ALL 1-BEDROOM UNITS ARE APPROXIMATELY 720 G.S.F.



1 BEDROOM UNITS
GROUND FLOOR PLAN
1/8" = 1'-0"

GROUP 'E' (1-BEDROOM UNITS)								
UNIT	GROUP	BLDG.	UNIT	GROUP	BLDG.	UNIT	GROUP	BLDG.
E1	E-1	E15	E-3	E23	E-5	E43	E-8	
E2	E-2	E16	E-4	E24	E-6	E44	E-9	
E3	E-1	E17	E-3	E31	E-6	E45	E-8	
E4	E-2	E18	E-4	E32	E-7	E46	E-9	
E5	E-1	E19	E-4	E33	E-6	E47	E-8	
E6	E-2	E20	E-5	E34	E-7	E48	E-9	
E7	E-2	E21	E-4	E35	E-6	E49	E-9	
E8	E-3	E22	E-5	E36	E-7	E50	E-10	
E9	E-2	E23	E-4	E37	E-7	E51	E-9	
E10	E-3	E24	E-5	E38	E-8	E52	E-10	
E11	E-2	E25	E-5	E39	E-7	E53	E-9	
E12	E-3	E26	E-6	E40	E-8	E54	E-10	
E13	E-3	E27	E-5	E41	E-7			
E14	E-4	E28	E-6	E42	E-8			

GROUP 'G' (1-BEDROOM UNITS)					
UNIT	GROUP	BLDG.	UNIT	GROUP	BLDG.
G1	G-1	G15	G-3		
G2	G-2	G16	G-4		
G3	G-1	G17	G-3		
G4	G-2	G18	G-4		
G5	G-1				
G6	G-2				
G7	G-2				
G8	G-3				
G9	G-2				
G10	G-3				
G11	G-2				
G12	G-3				
G13	G-3				
G14	G-4				

THE UNDERSIGNED, A REGISTERED ARCHITECT, HAS VISITED THE SITE KNOWN AS CARLYLE HEIGHTS CONDOMINIUM AND VIEWED THE PROPERTY, AND, TO THE BEST OF HIS KNOWLEDGE, INFORMATION AND BELIEF; (i) THE EXTERIOR WALLS AND ROOF OF EACH SUCH STRUCTURE ARE IN PLACE AS SHOWN ON SAID PLANS; AND (ii) SUCH WALLS, PARTITIONS, FLOORS, AND CEILINGS, TO THE EXTENT SHOWN ON SAID PLANS, AS CONSTITUTE THE HORIZONTAL BOUNDARIES, IF ANY, AND THE VERTICAL BOUNDARIES OF EACH UNIT, INCLUDING CONVERTIBLE SPACE, HAVE BEEN SUFFICIENTLY CONSTRUCTED SO AS TO ESTABLISH CLEARLY THE PHYSICAL BOUNDARIES OF SUCH UNIT.

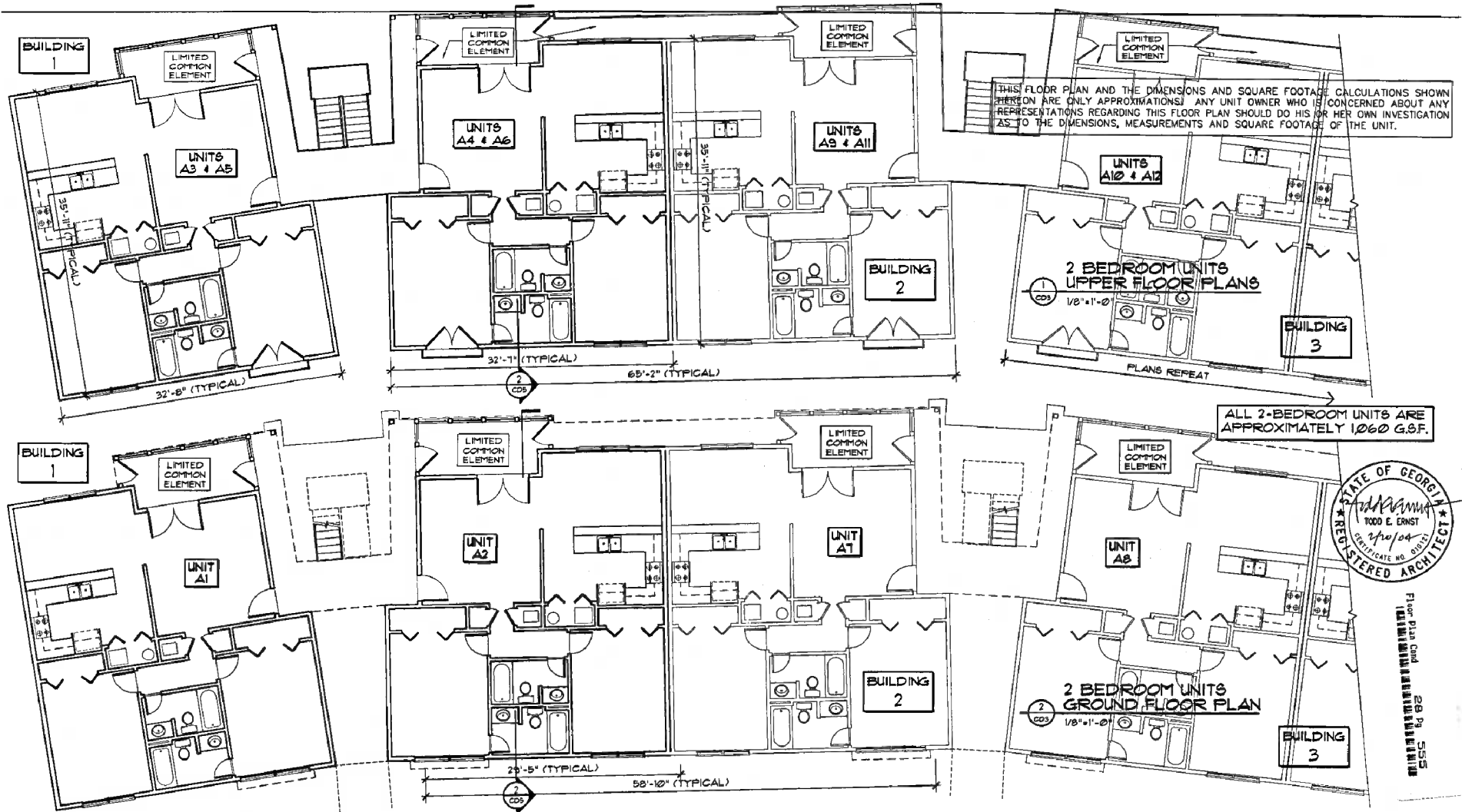
Todd E. Ernst
NAME: TODD E. ERNST

THE CONDOMINIUM DECLARATION FOR CARLYLE HEIGHTS CONDOMINIUM IS RECORDED IN DEED BOOK 5736 PAGE 168 OF THE SUPERIOR COURT OF FULTON COUNTY, GEORGIA RECORDS.

Architecture & Design
1445 MONROE DRIVE
ATLANTA, GA 30324

DATE: 20 FEB 04
SCALE: NOTED
ISSUED FOR: Review Pricing Permit Construction

CD2
PRJ # 04016



Floor Plan CD3 29 Pg. 555
11/11/2014 10:00 AM

GROUP 'A' (2-BEDROOM UNITS)	
UNIT	GROUP BLDG.
A1	A-1
A2	A-2
A3	A-1
A4	A-2
A5	A-1
A6	A-2
A7	A-2
A8	A-3
A9	A-2
A10	A-3
A11	A-2
A12	A-3

GROUP 'B' (2-BEDROOM UNITS)	
UNIT	GROUP BLDG.
B1	B-1
B2	B-2
B3	B-1
B4	B-2
B5	B-1
B6	B-2
B7	B-2
B8	B-3
B9	B-2
B10	B-3
B11	B-2
B12	B-3
B13	B-3
B14	B-4
B15	B-3
B16	B-4
B17	B-3
B18	B-4

GROUP 'C' (2-BEDROOM UNITS)					
UNIT	GROUP BLDG.	UNIT	GROUP BLDG.	UNIT	GROUP BLDG.
C1	C-1	C19	C-4	C37	C-7
C2	C-2	C20	C-5	C38	C-8
C3	C-1	C21	C-4	C39	C-7
C4	C-2	C22	C-5	C40	C-8
C5	C-1	C23	C-4	C41	C-7
C6	C-2	C24	C-5	C42	C-8
C7	C-2	C25	C-5	C43	C-8
C8	C-3	C26	C-6	C44	C-9
C9	C-2	C27	C-5	C45	C-8
C10	C-3	C28	C-6	C46	C-9
C11	C-2	C29	C-5	C47	C-8
C12	C-3	C30	C-6	C48	C-9
C13	C-3	C31	C-6		
C14	C-4	C32	C-7		
C15	C-3	C33	C-6		
C16	C-4	C34	C-7		
C17	C-3	C35	C-6		
C18	C-4	C36	C-7		

GROUP 'F' (2-BEDROOM UNITS)			
UNIT	GROUP BLDG.	UNIT	GROUP BLDG.
F1	F-1	F19	F-4
F2	F-2	F20	F-5
F3	F-1	F21	F-4
F4	F-2	F22	F-5
F5	F-1	F23	F-4
F6	F-2	F24	F-5
F7	F-2	F25	F-5
F8	F-3	F26	F-6
F9	F-2	F27	F-5
F10	F-3	F28	F-6
F11	F-2	F29	F-5
F12	F-3	F30	F-6
F13	F-3	F31	F-6
F14	F-4	F32	F-7
F15	F-3	F33	F-6
F16	F-4	F34	F-7
F17	F-3	F35	F-6
F18	F-4	F36	F-7

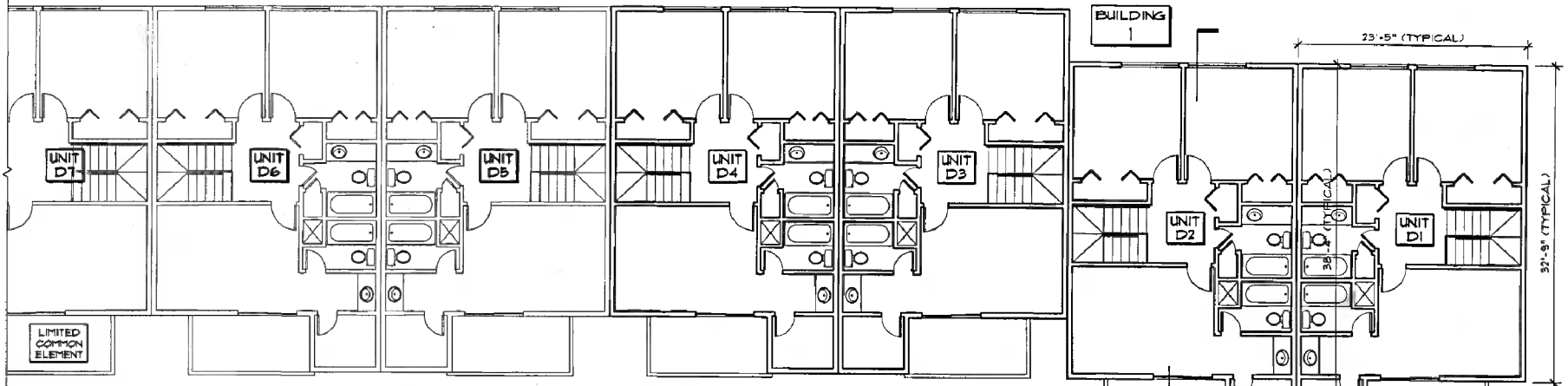
THE UNDERSIGNED, A REGISTERED ARCHITECT, HAS VISITED THE SITE KNOWN AS CARLYLE HEIGHTS CONDOMINIUM AND VIEWED THE PROPERTY, AND, TO THE BEST OF HIS KNOWLEDGE, INFORMATION AND BELIEF: (1) THE EXTERIOR WALLS AND ROOF OF EACH SUCH STRUCTURE ARE IN PLACE AS SHOWN ON SAID PLANS; AND (2) SUCH WALLS, PARTITIONS, FLOORS, AND CEILINGS, TO THE EXTENT SHOWN ON SAID PLANS, AS CONSTITUTE THE HORIZONTAL BOUNDARIES, IF ANY, AND THE VERTICAL BOUNDARIES OF EACH UNIT, INCLUDING CONVERTIBLE SPACE, HAVE BEEN SUFFICIENTLY CONSTRUCTED SO AS TO ESTABLISH CLEARLY THE PHYSICAL BOUNDARIES OF SUCH UNIT.

T. ERNST
NAME: TODD E. ERNST

THE CONDOMINIUM DECLARATION FOR CARLYLE HEIGHTS CONDOMINIUM IS RECORDED IN DEED BOOK 2123, PAGE 162, OF THE SUPERIOR COURT OF FULTON COUNTY, GEORGIA RECORDS.

All drawings herewith are instruments of the Architect's service, for use solely with respect to the project. George Herbeck shall not be used by the Owner or others for other projects, past, present or future, without the written consent of the Architect.

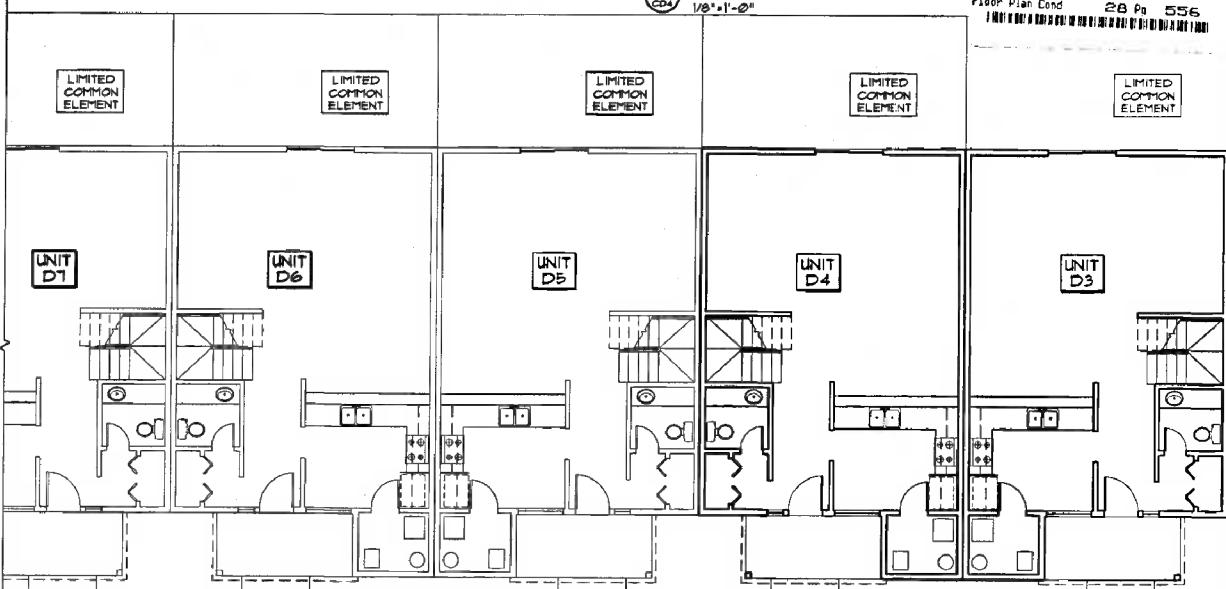
CARLYLE HEIGHTS CONDOMINIUM 1445 MONROE DRIVE ATLANTA, GA 30324	 Architecture & Design <small>107 HERVEY ST. SUITE 200 ATLANTA, GA 30309</small>	DATE	20 FEB 04	CD3 PROJ # 0401b
		SCALE	NOTED	
		ISSUED FOR	<input checked="" type="checkbox"/> Review <input type="checkbox"/> Pricing <input type="checkbox"/> Permit <input type="checkbox"/> Construction	



**TOWNHOUSE UNITS
UPPER FLOOR PLANS**
1
CD4
1/8" = 1'-0"

THIS FLOOR PLAN AND THE DIMENSIONS AND SQUARE FOOTAGE CALCULATIONS SHOWN HEREON ARE ONLY APPROXIMATIONS. ANY UNIT OWNER WHO IS CONCERNED ABOUT ANY REPRESENTATIONS REGARDING THIS FLOOR PLAN SHOULD DO HIS OR HER OWN INVESTIGATION AS TO THE DIMENSIONS, MEASUREMENTS AND SQUARE FOOTAGE OF THE UNIT.

**TOWNHOUSE UNITS
GROUND FLOOR PLAN**
2
CD4
1/8" = 1'-0"



Floor Plan Cont. 28 Pa. 556
1/8" = 1'-0"

ALL TOWNHOUSE UNITS ARE APPROXIMATELY 1,500 G.S.F.



THE UNDERSIGNED, A REGISTERED ARCHITECT, HAS VISITED THE SITE KNOWN AS CARLYLE HEIGHTS CONDOMINIUM AND VIEWED THE PROPERTY, AND, TO THE BEST OF HIS KNOWLEDGE, INFORMATION AND BELIEF; (i) THE EXTERIOR WALLS AND ROOF OF EACH SUCH STRUCTURE ARE IN PLACE AS SHOWN ON SAID PLANS; AND (ii) SUCH WALLS, PARTITIONS, FLOORS, AND CEILINGS, TO THE EXTENT SHOWN ON SAID PLANS, AS CONSTITUTE THE HORIZONTAL BOUNDARIES, IF ANY, AND THE VERTICAL BOUNDARIES OF EACH UNIT, INCLUDING CONVERTIBLE SPACE, HAVE BEEN SUFFICIENTLY CONSTRUCTED SO AS TO ESTABLISH CLEARLY THE PHYSICAL BOUNDARIES OF SUCH UNIT.

Todd E. Ernst
NAME: TODD E. ERNST

THE CONDOMINIUM DECLARATION FOR CARLYLE HEIGHTS CONDOMINIUM IS RECORDED IN DEED BOOK 3266, PAGE 148 OF THE SUPERIOR COURT OF FULTON COUNTY, GEORGIA RECORDS.

GROUP 'D'
(TOWNHOUSE UNITS)

UNIT	GROUP BLDG.	UNIT	GROUP BLDG.
D1	D-1	D11	D-1
D2	D-1	D12	D-1
D3	D-1	D13	D-1
D4	D-1	D14	D-1
D5	D-1	D15	D-1
D6	D-1	D16	D-1
D7	D-1		
D8	D-1		
D9	D-1		
D10	D-1		

All drawings herewith are instruments of the Architect's services, for use solely with respect to this project. Drawings herewith shall not be used by the Owner or others for other projects, additions to this or other projects, or completion of this project by the Owner or others, except by written agreement with the Architect.

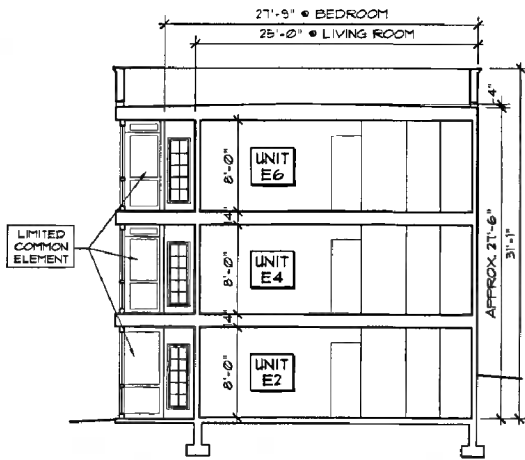
CARLYLE HEIGHTS CONDOMINIUM
1445 MONROE DRIVE
ATLANTA, GA 30324

Architecture & Design
201 BROADWAY, SUITE 1000, ATLANTA, GA 30303

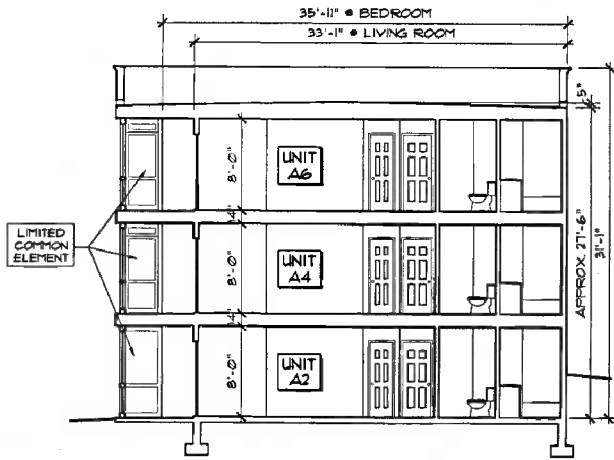
DATE: 20 FEB 04
SCALE: NOTED
ISSUED FOR: Review, Pricing, Permit, Construction

PROJ # 042010

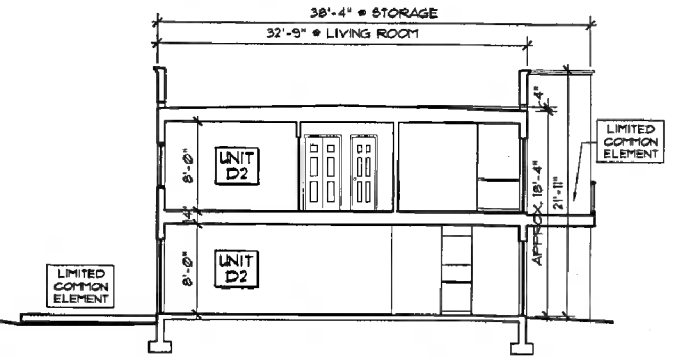
CD4



SECTION # 1
1-BEDROOM UNIT
1/8" = 1'-0"



SECTION # 2
2-BEDROOM UNIT
1/8" = 1'-0"



SECTION # 3
TOWNHOUSE UNIT
1/8" = 1'-0"

Floor Plan Cond 28 Pg 557
1 UNIT = 1 UNIT IN CASE OF COPY OR FOR ANY OTHER REASON

THIS FLOOR PLAN AND THE DIMENSIONS AND SQUARE FOOTAGE CALCULATIONS SHOWN HEREON ARE ONLY APPROXIMATIONS. ANY UNIT OWNER WHO IS CONCERNED ABOUT ANY REPRESENTATIONS REGARDING THIS FLOOR PLAN SHOULD DO HIS OR HER OWN INVESTIGATION AS TO THE DIMENSIONS, MEASUREMENTS AND SQUARE FOOTAGE OF THE UNIT.

THE UNDERSIGNED, A REGISTERED ARCHITECT, HAS VISITED THE SITE KNOWN AS CARLYLE HEIGHTS CONDOMINIUM AND VIEWED THE PROPERTY, AND, TO THE BEST OF HIS KNOWLEDGE, INFORMATION AND BELIEF; (i) THE EXTERIOR WALLS AND ROOF OF EACH SUCH STRUCTURE ARE IN PLACE AS SHOWN ON SAID PLANS; AND (ii) SUCH WALLS, PARTITIONS, FLOORS, AND CEILINGS, TO THE EXTENT SHOWN ON SAID PLANS, AS CONSTITUTE THE HORIZONTAL BOUNDARIES, IF ANY, AND THE VERTICAL BOUNDARIES OF EACH UNIT, INCLUDING CONVERTIBLE SPACE, HAVE BEEN SUFFICIENTLY CONSTRUCTED SO AS TO ESTABLISH CLEARLY THE PHYSICAL BOUNDARIES OF SUCH UNIT.

Tom E. Ernst
NAME: TOM E. ERNST

THE CONDOMINIUM DECLARATION FOR CARLYLE HEIGHTS CONDOMINIUM IS RECORDED IN DEED BOOK 1632 PAGE 1632 OF THE SUPERIOR COURT OF FULTON COUNTY, GEORGIA RECORDS.

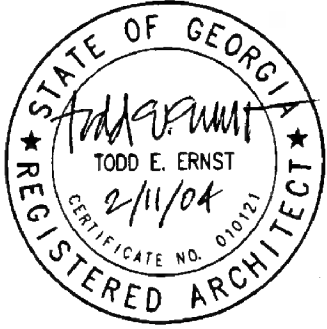
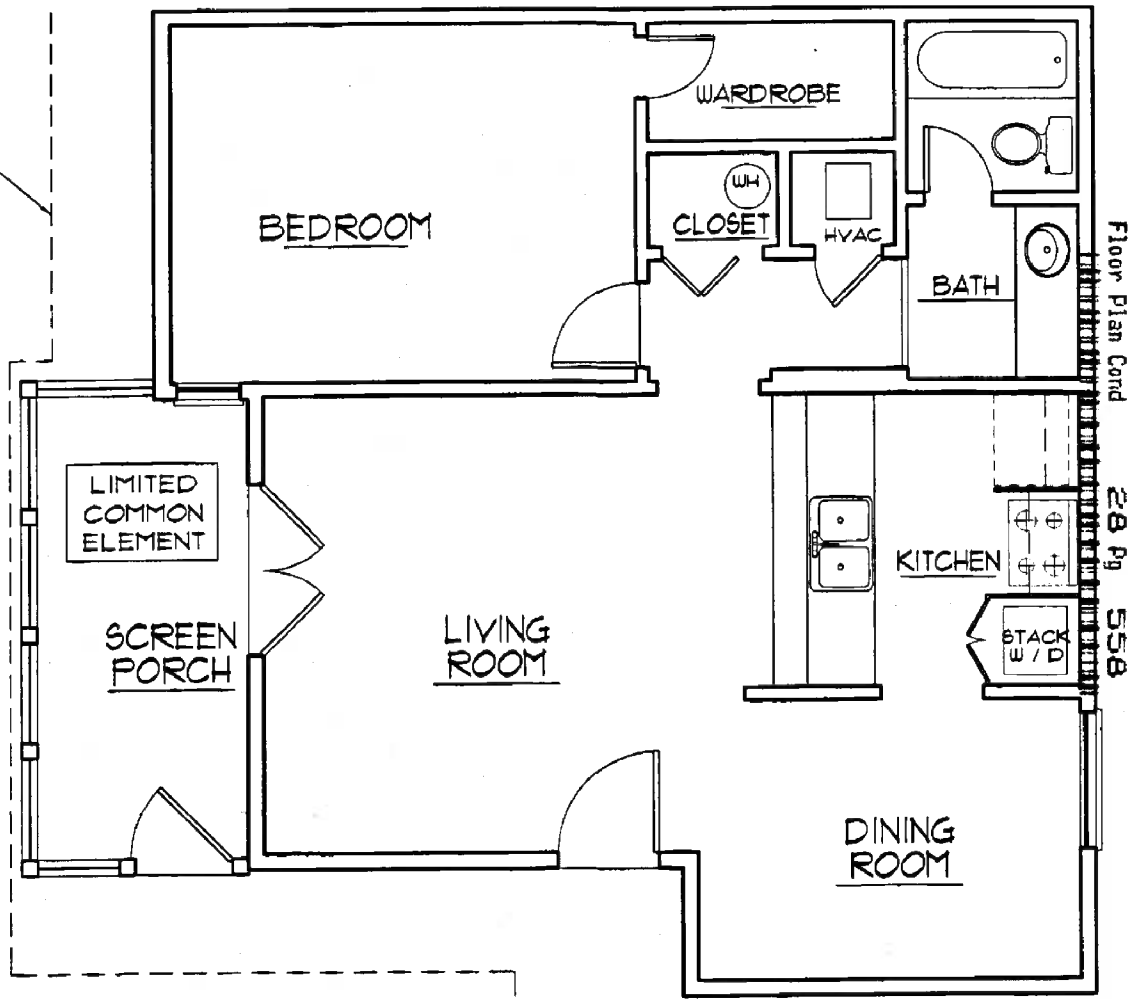


At design herewith are instruments of the Architect's services, for use solely with respect to this project. Drawings herewith shall not be used by the Owner or others for other projects, editions to this or other projects, or completion of this project by the Owner or others, except by written agreement with the Architect.

CARLYLE HEIGHTS CONDOMINIUM 1445 MONROE DRIVE ATLANTA, GA 30324		DATE 20 FEB 04 SCALE NOTED ISSUED FOR <input checked="" type="checkbox"/> Review <input checked="" type="checkbox"/> Pricing <input checked="" type="checkbox"/> Permit <input checked="" type="checkbox"/> Construction	CD5 PROJ # 04010
	ARCHITECTURE & DESIGN <small>207 MARSHALL CT. LAWRENCE, GA 30246 478-687-0728</small>		

© 2004 ERNST, INC.

LIMITED COMMON ELEMENT
(@ UPPER LEVELS)



1 BEDROOM / 1 BATH (EVEN UNITS)
3/16" = 1'-0"

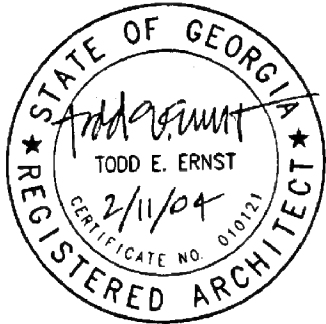
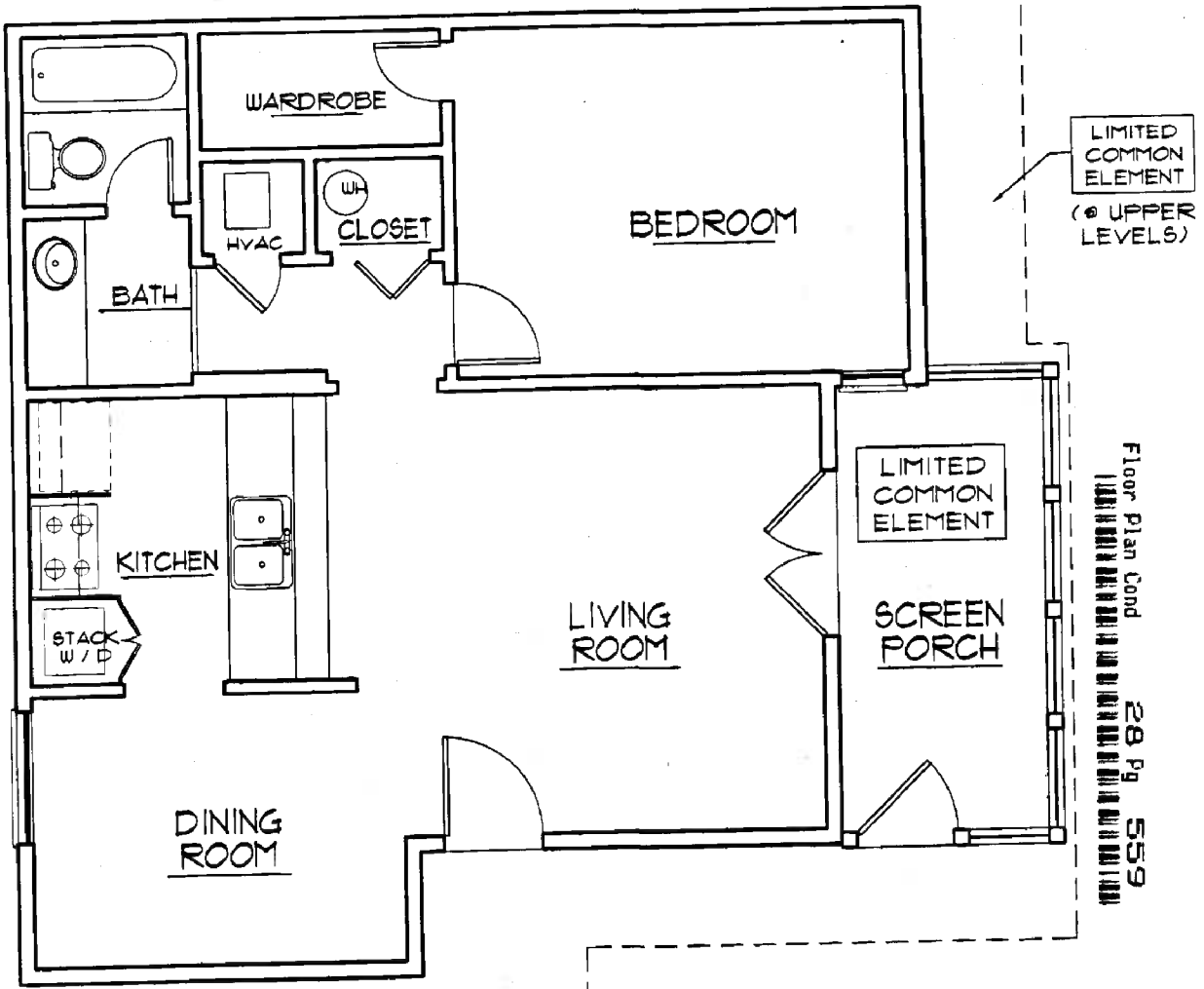
1-BEDROOM UNITS ARE APPROXIMATELY 720 G.S.F. EI - E54 GI - G18

THE PERIMETRICAL OR VERTICAL BOUNDARIES OF EACH UNIT SHALL BE THE OUTERMOST UNFINISHED SURFACES OF THE WALLS OF THE UNIT. THE VERTICAL BOUNDARIES INCLUDE THE GYPSUM BOARD ON THE UNIT SIDE OF THE WALL AND THEY ARE EXTENDED TO THEIR INTERSECTIONS WITH THE UPPER AND LOWER HORIZONTAL BOUNDARIES OF THE UNIT.

THESE FLOOR PLANS AND THE DIMENSIONS AND SQUARE FOOTAGE CALCULATIONS SHOWN HEREON ARE ONLY APPROXIMATIONS. ANY UNIT OWNER WHO IS CONCERNED ABOUT ANY REPRESENTATIONS REGARDING THE FLOOR PLANS SHOULD DO HIS OR HER OWN INVESTIGATION AS TO THE DIMENSIONS, MEASUREMENTS AND SQUARE FOOTAGE OF HIS OR HER UNIT.

All drawings herewith are instruments of the Architect's service, for use solely with respect to this project. Drawings herewith shall not be used by the Owner or others for other Projects, additions to this or other projects, or completion of this Project by the Owner or others, except by written agreement with the Architect.

CARLYLE HEIGHTS CONDOMINIUM 1445 MONROE DRIVE ATLANTA, GA 30324	 Architecture & Design 2317 RUNNYMEDE CT JONESBORO GA 30236 678.438.5778	DATE	11 FEB 04	CD6
		SCALE	NOTED	
		ISSUED FOR	<input checked="" type="checkbox"/> Review <input type="checkbox"/> Pricing <input type="checkbox"/> Permit <input type="checkbox"/> Construction	PROJ # 0401b



1 BEDROOM /
1 BATH (ODD UNITS)
3/16" = 1'-0"

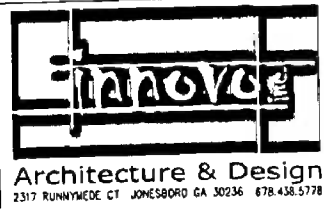
1-BEDROOM UNITS ARE APPROXIMATELY 720 G.S.F.
E1 - E54
G1 - G18

THE PERIMETRICAL OR VERTICAL BOUNDARIES OF EACH UNIT SHALL BE THE OUTERMOST UNFINISHED SURFACES OF THE WALLS OF THE UNIT. THE VERTICAL BOUNDARIES INCLUDE THE GYPSUM BOARD ON THE UNIT SIDE OF THE WALL AND THEY ARE EXTENDED TO THEIR INTERSECTIONS WITH THE UPPER AND LOWER HORIZONTAL BOUNDARIES OF THE UNIT.

THESE FLOOR PLANS AND THE DIMENSIONS AND SQUARE FOOTAGE CALCULATIONS SHOWN HEREON ARE ONLY APPROXIMATIONS. ANY UNIT OWNER WHO IS CONCERNED ABOUT ANY REPRESENTATIONS REGARDING THE FLOOR PLANS SHOULD DO HIS OR HER OWN INVESTIGATION AS TO THE DIMENSIONS, MEASUREMENTS AND SQUARE FOOTAGE OF HIS OR HER UNIT.

All drawings herewith are instruments of the Architect's service, for use solely with respect to this project. Drawings herewith shall not be used by the Owner or others for other Projects, additions to this or other projects, or completion of this Project by the Owner or others, except by written agreement with the Architect.

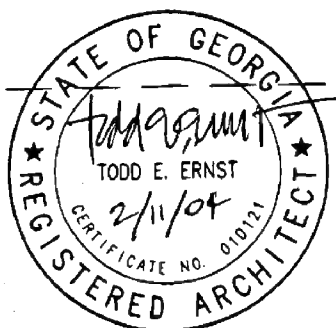
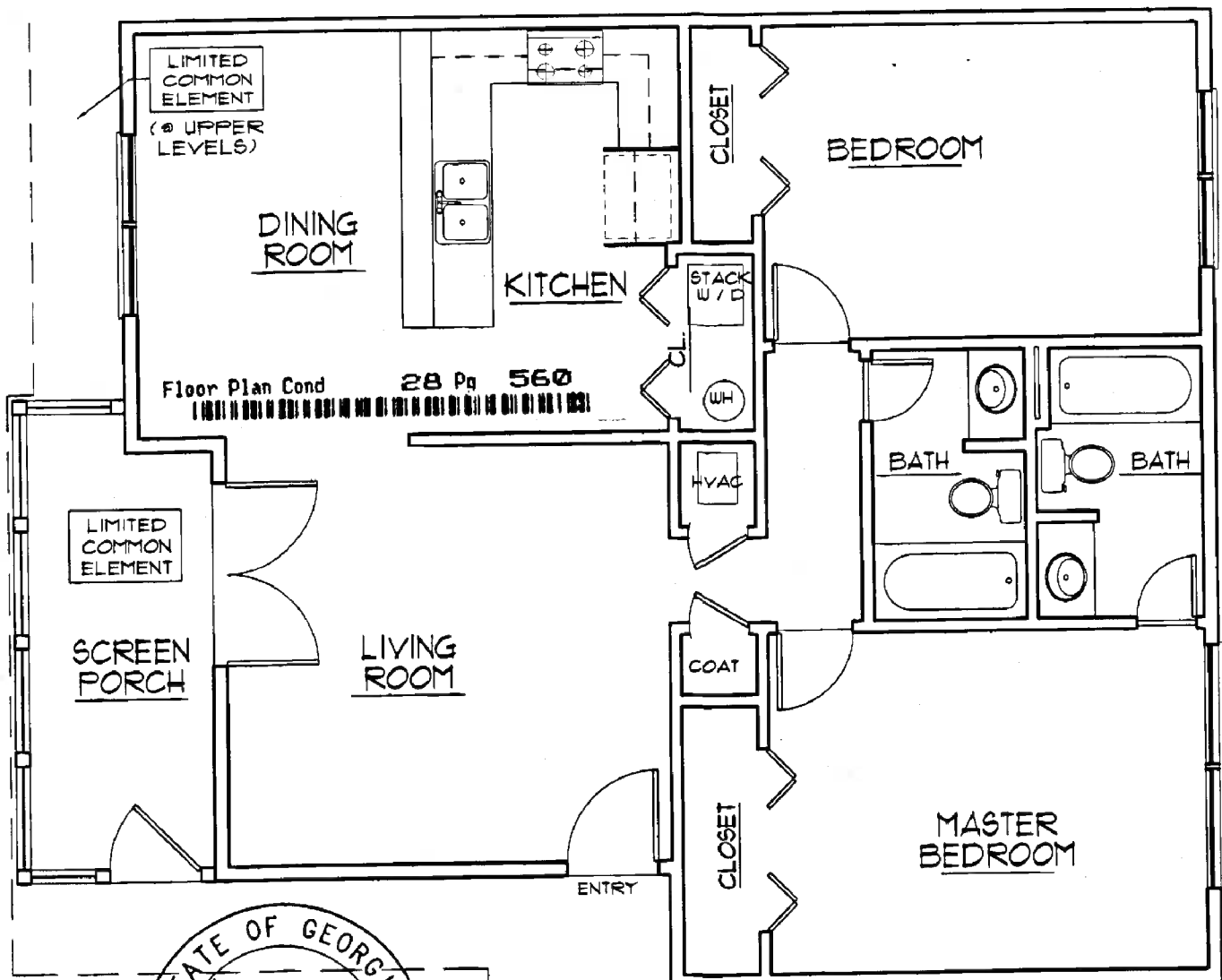
CARLYLE HEIGHTS CONDOMINIUM
1445 MONROE DRIVE
ATLANTA, GA 30324



DATE	11 FEB 04
SCALE	NOTED
ISSUED FOR	<input checked="" type="checkbox"/> Review <input type="checkbox"/> Pricing <input type="checkbox"/> Permit <input type="checkbox"/> Construction

CD6a

PROJ # 0401b



2 BEDROOM /
 2 BATH (EVEN UNITS)
 3/16" = 1'-0"

2-BEDROOM UNITS ARE APPROXIMATELY 1,060 G.S.F.

- A1 - A12
- B1 - B18
- C1 - C48
- F1 - F36

THE PERIMETRICAL OR VERTICAL BOUNDARIES OF EACH UNIT SHALL BE THE OUTERMOST UNFINISHED SURFACES OF THE WALLS OF THE UNIT. THE VERTICAL BOUNDARIES INCLUDE THE GYPSUM BOARD ON THE UNIT SIDE OF THE WALL AND THEY ARE EXTENDED TO THEIR INTERSECTIONS WITH THE UPPER AND LOWER HORIZONTAL BOUNDARIES OF THE UNIT.

THESE FLOOR PLANS AND THE DIMENSIONS AND SQUARE FOOTAGE CALCULATIONS SHOWN HEREON ARE ONLY APPROXIMATIONS. ANY UNIT OWNER WHO IS CONCERNED ABOUT ANY REPRESENTATIONS REGARDING THE FLOOR PLANS SHOULD DO HIS OR HER OWN INVESTIGATION AS TO THE DIMENSIONS, MEASUREMENTS AND SQUARE FOOTAGE OF HIS OR HER UNIT.

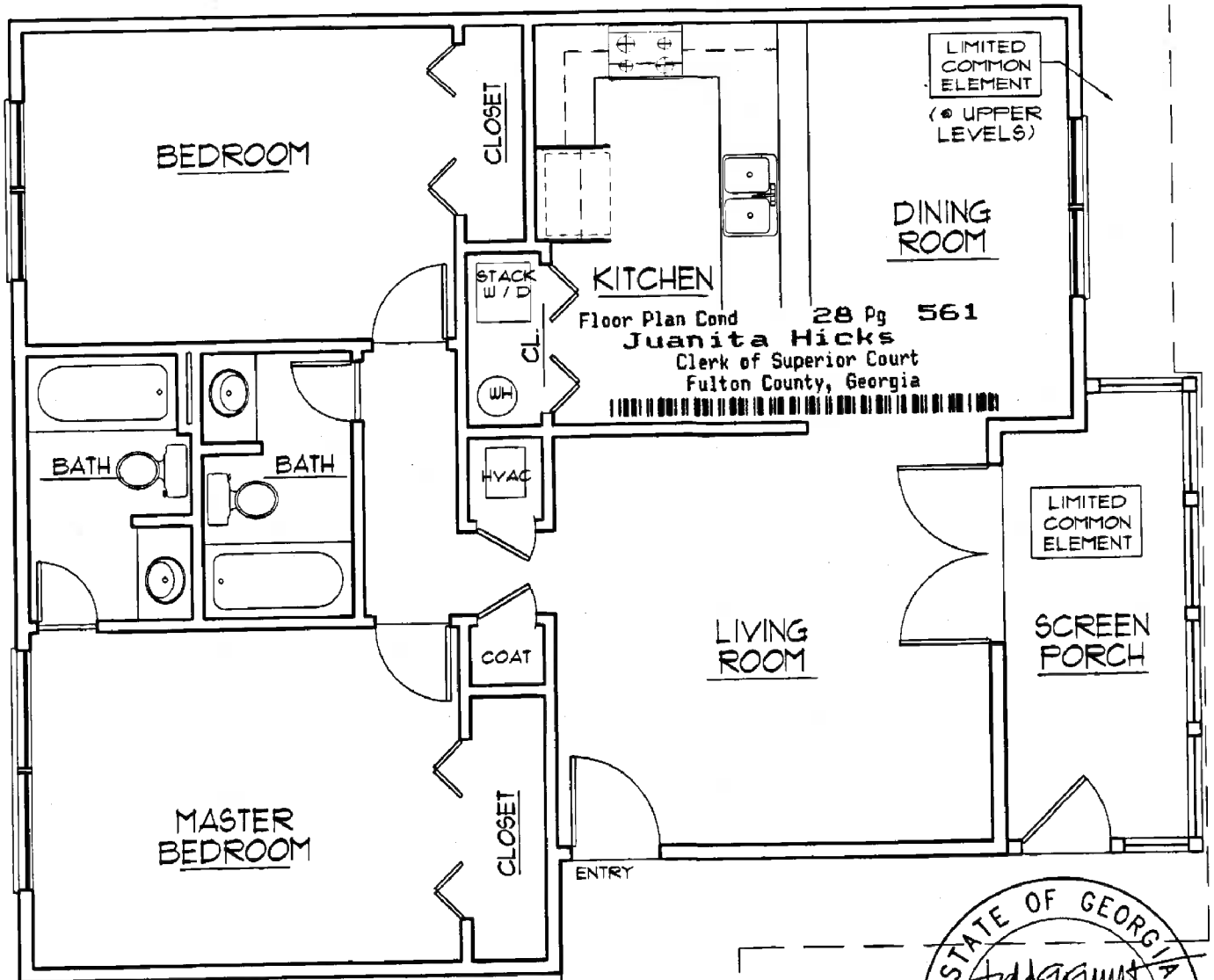
All drawings herewith are instruments of the Architect's service, for use solely with respect to this project. Drawings herewith shall not be used by the Owner or others for other Projects, additions to this or other projects, or completion of this Project by the Owner or others, except by written agreement with the Architect.

**CARLYLE HEIGHTS
 CONDOMINIUM**
 1445 MONROE DRIVE
 ATLANTA, GA 30324



DATE	11 FEB 04
SCALE	NOTED
ISSUED FOR	<input checked="" type="checkbox"/> Review <input type="checkbox"/> Pricing <input type="checkbox"/> Permit <input type="checkbox"/> Construction

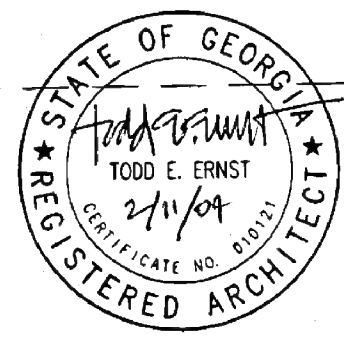
CD7
 PROJ # 0401b



1
 CD7a
 2 BEDROOM /
 2 BATH (ODD UNITS)
 3/16" = 1'-0"

2-BEDROOM UNITS ARE APPROXIMATELY 1,060 G.S.F.

- A1 - A12
- B1 - B18
- C1 - C48
- F1 - F36

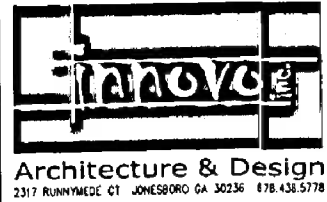


THE PERIMETRICAL OR VERTICAL BOUNDARIES OF EACH UNIT SHALL BE THE OUTERMOST UNFINISHED SURFACES OF THE WALLS OF THE UNIT. THE VERTICAL BOUNDARIES INCLUDE THE GYPSUM BOARD ON THE UNIT SIDE OF THE WALL AND THEY ARE EXTENDED TO THEIR INTERSECTIONS WITH THE UPPER AND LOWER HORIZONTAL BOUNDARIES OF THE UNIT.

THESE FLOOR PLANS AND THE DIMENSIONS AND SQUARE FOOTAGE CALCULATIONS SHOWN HEREON ARE ONLY APPROXIMATIONS. ANY UNIT OWNER WHO IS CONCERNED ABOUT ANY REPRESENTATIONS REGARDING THE FLOOR PLANS SHOULD DO HIS OR HER OWN INVESTIGATION AS TO THE DIMENSIONS, MEASUREMENTS AND SQUARE FOOTAGE OF HIS OR HER UNIT.

All drawings herewith are instruments of the Architect's service, for use solely with respect to this project. Drawings herewith shall not be used by the Owner or others for other Projects, additions to this or other projects, or completion of this Project by the Owner or others, except by written agreement with the Architect.

**CARLYLE HEIGHTS
 CONDOMINIUM**
 1445 MONROE DRIVE
 ATLANTA, GA 30324



DATE	11 FEB 04
SCALE	NOTED
ISSUED FOR	<input checked="" type="checkbox"/> Review <input type="checkbox"/> Pricing <input type="checkbox"/> Permit <input type="checkbox"/> Construction

CD7a
 PROJ # 0401b